

1021-1790-1543

RL -ok
12/02

Absorbine® Bug Block® is an outstanding value because it is proven to kill and repel flying and biting pests. For use only on horses and ponies.

DIRECTIONS FOR USE

It is violation of Federal Law to use this product in a manner inconsistent with its labeling.

READ ALL DIRECTIONS COMPLETELY BEFORE USE

SHAKE WELL BEFORE USE – Ready to use.

HORSES, PONIES AND FOALS

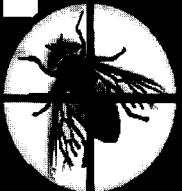
Do not apply to foals under 12 weeks of age. Kills and repels Stable flies, Horn flies, House flies, Face flies, Horse flies, Deer flies, Cluster flies, Sciarid flies, Mosquitoes including Culex species which has been known to transmit West Nile Virus, Gnats, Midges, Punkies and No-See-Ums, Carpenter Bees, Moths including Almond, Chocolate, Tobacco, Indian Meal, Angoumois Grain, and other flying moths, Fleas, Ticks including Brown Dog, Lone Star, Deer, Other Ixodid Species, American Dog, and Gulf Coast, Chiggers and Lice.



EASY SWIPE™
Applicator



BUG BLOCK®



RAPID KILL & REPELLENCY

Kills and Repels Biting Flies, Gnats, Ticks and Mosquitoes including Culex species which has been known to transmit West Nile Virus

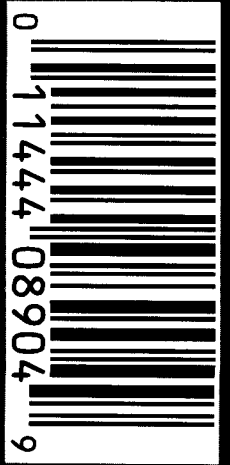
PEEL HERE
for more information

Remove cap from bottle. Apply around animal's nose, eyes, ears and mouth. May also be used as a spot treatment on areas where flies gather. Avoid direct application to eyes, nose and mouth. Replace cap after use. For initial treatment apply daily for 2 to 3 days. As infestation subsides, repeat treatment every 7 – 14 days or as prescribed by a veterinarian. Also re-apply every time animal is washed or exposed to heavy rain.

Distributed by: W.F. Young, Inc.
E. Longmeadow, MA 01028 U.S.A.

© W.F.Y.
www.absorbine.com

The Horse World's Most Trusted Name®
A Family Company Since 1892™
RM 323508
EPA Reg. No. 1021-1790-1543
EPA Est. No. 73723-TX-1



STORAGE AND DISPOSAL

STORAGE: Do not contaminate water, food or feed by storage or disposal. Store in a cool, dry storage area, preferably one that can be locked. Store container upright and in the original container.

DISPOSAL: If empty: Do not reuse this container. Place in trash or offer for recycling if available. If partly filled: Call your local solid waste agency or 1-800-CLEANUP for disposal instructions. Never place unused product down any indoor or outdoor drain.

PRECAUTIONARY STATEMENTS

HAZARDS TO HUMANS & DOMESTIC ANIMALS: CAUTION Harmful if absorbed through the skin. Avoid contact with skin, eyes or clothing. Wash hands thoroughly after handling and before eating, drinking, chewing gum or using tobacco. Remove and wash contaminated clothing before reuse. Avoid contamination of food or feedstuffs. Prolonged or frequently repeated skin contact may cause allergic reaction in some individuals. Sensitivities may occur after using ANY pesticide product for pets. If signs of sensitivity occur, bathe your pet with mild soap and rinse with large amounts of water. If signs continue, consult a veterinarian immediately.

ENVIRONMENTAL HAZARDS: This pesticide is extremely toxic to fish and aquatic invertebrates. Do not apply directly to water. Do not contaminate water when disposing of equipment washwaters or rinsate. This product is toxic to bees exposed to direct treatment on blooming crops or weeds. Do not apply this product or allow drift when bees are actively visiting treatment area.

FIRST AID

If swallowed	<ul style="list-style-type: none">• Immediately call a poison control center or doctor.• Do not induce vomiting unless told to do so by poison control center or doctor.• Do not give any liquid to the person.• Do not give anything by mouth to an unconscious person.
If on skin or clothing	<ul style="list-style-type: none">• Take off contaminated clothing.• Rinse skin immediately with plenty of water for 15-20 minutes.• Call a poison control center or doctor for treatment advice.
Have the product container or label with you when calling a poison control center or doctor, or going for treatment. For information regarding medical emergencies or pesticide incidents, call the International Poison Control Center at 1-888-740-8712.	