

1 1/16"

2 3/16"

11 1/2"

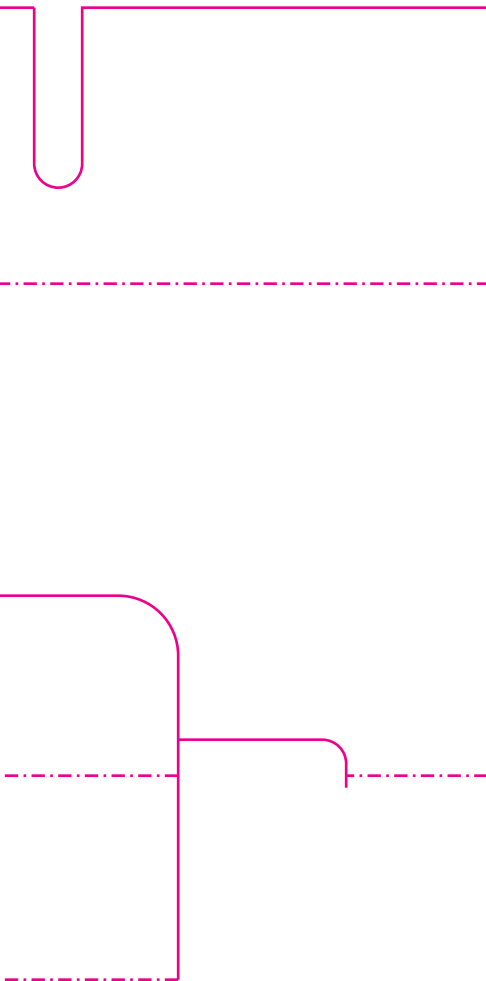
2 1/2"

5 1/16"

5"

5"

1 1/2"



# MINERAL RESERVOIR

## Here's How It Works

- The Aqua Smarte System destroys bacteria.
- The Aqua Smarte Mineral System reduces chlorine use up to 50%\*
- When using the chlorine Bac Pac water flows through minerals and chlorine so one unit does all.



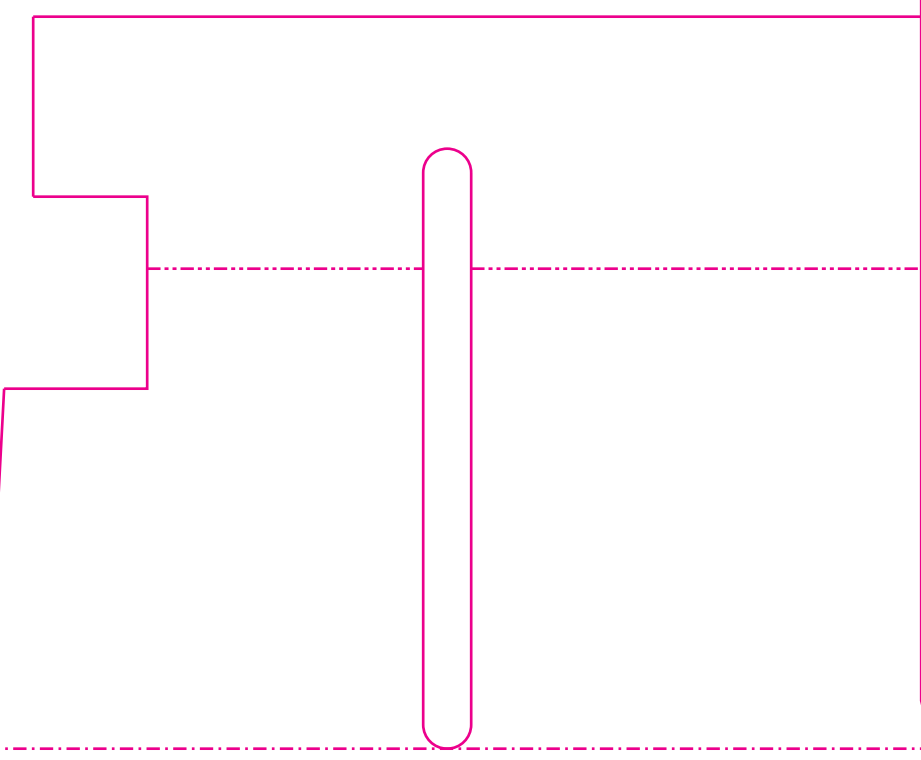
\* Compared to the minimum EPA recommended chlorine level of 1.0 ppm for a stabilized swimming pool.



**KING TECHNOLOGY, INC.**  
530 11th Avenue South, Hopkins, MN 55343  
1-800-222-0169 www.kingtechnology.com

Covered by one or more of the following patent numbers: 6,210,566; 6,217,892; 6,383,507; 6,544,415; 6,551,609; 6,652,871 and other U.S. and Foreign Patents Pending.

PN #20-44-0307  
E020107553080743R4N



## EXPERIENCE THE AQUA SMARTE<sup>®</sup> DIFFERENCE

- LESS WORK**  
with no daily dosing of minerals or chlorine
- SPARKLING WATER**  
for above ground pools
- REDUCES RED EYES AND FADING SWIMSUITS**
- SOFT SKIN**
- LOWER CHLORINE LEVELS**  
help prevent damage to equipment and surfaces



Now comes with water polishers for easier pool start-up.

# AQUA SMARTE<sup>®</sup> MINERAL RESERVOIR

## AQUA SMARTE<sup>®</sup> MINERAL RESERVOIR

NOW WITH START-UP WATER POLISHERS

Patented Mineral Pool **Disinfectant**  
The Complete Low Chlorine Alternative+

Improves Water Quality By:

- Destroying bacteria for improved clarity.
- Helping to maintain a neutral pH.
- Reducing chlorine use for softer water.



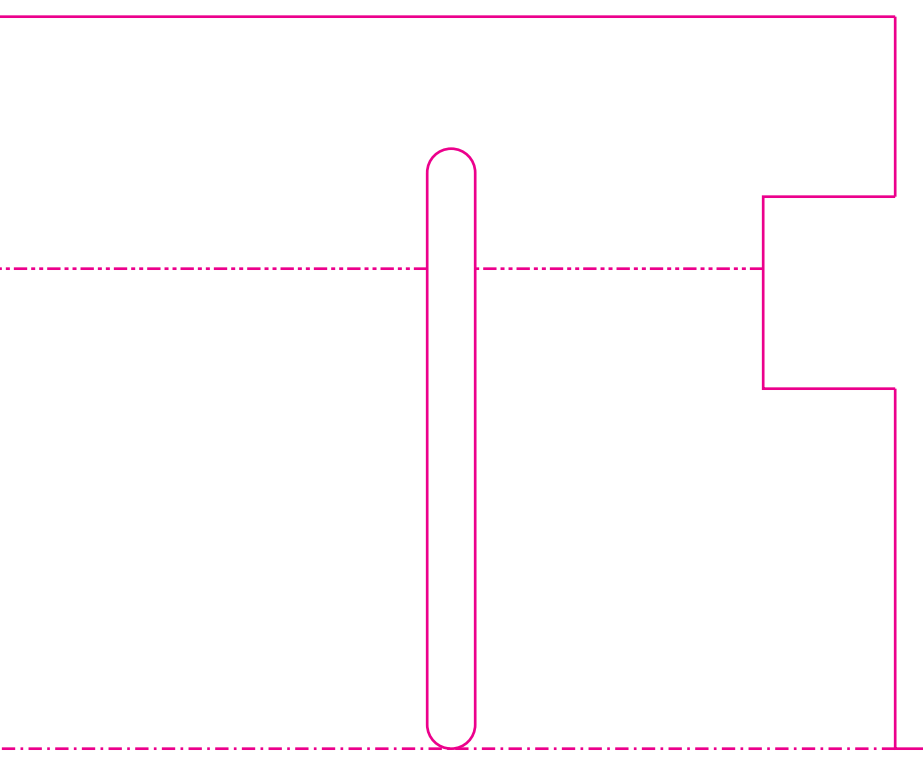
**ABOVE GROUND SERIES 6700**  
FOR USE WITH THE AQUA SMARTE<sup>®</sup> CYCLER MODELS 6700 & 5720

**Active Ingredient:**  
Silver Chloride: 0.5%  
Other Ingredients: 99.5%  
Total: 100.0%

NET WT.: 1.6 lbs.  
EPA Reg. No.: 53735-11  
EPA Est. No.: 071209-AZ-001

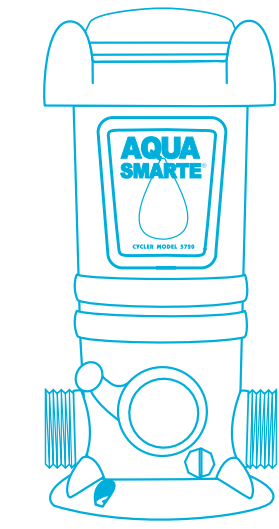
**KEEP OUT OF REACH OF CHILDREN**  
**CAUTION**  
See Enclosed Product Label and Instruction Manual for Complete Directions For Use.

+ Aqua Smarte Mineral Reservoir must be used with at least 0.5 ppm chlorine. To enjoy the complete system, Aqua Smarte Mineral Reservoir must be used in conjunction with the EPA registered chlorine Bac Pac (EPA Reg. No. 53735-2) or other compatible EPA registered sources of chlorine approved specifically for swimming pools or a chlorine delivery device.  
\*Compared to the minimum EPA recommended chlorine level of 1.0 ppm for a stabilized swimming pool.



## MINERAL RESERVOIR

### A Mineral Disinfectant System With 3 Parts



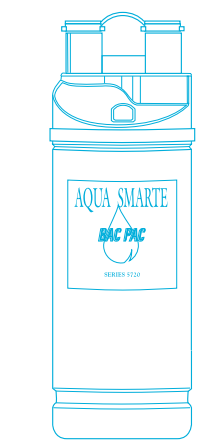
### Aqua Smarte Cyclor

The Cyclor holds the Aqua Smarte Mineral Reservoir and chlorine Bac Pac.



### Aqua Smarte Mineral Reservoir

Mineral Reservoir fits inside the Cyclor and contains the minerals that destroy bacteria. Replace every season. Do not use more than 6 consecutive months.



### Aqua Smarte Bac Pac

Sits inside the Aqua Smarte Mineral Reservoir for a complete system. Set Cyclor dial for achieving at least a 0.5 ppm chlorine level (see instruction manual). Replace chlorine Bac Pac when empty. Bac Pac sold separately. (EPA Reg. No. 53735-2)

5"

5 1/16"

5 1/16"

5"